

## TECHNICAL WHITE PAPER

### CONTENTS & NAVIGATION

#### 1

Introduction

#### 2

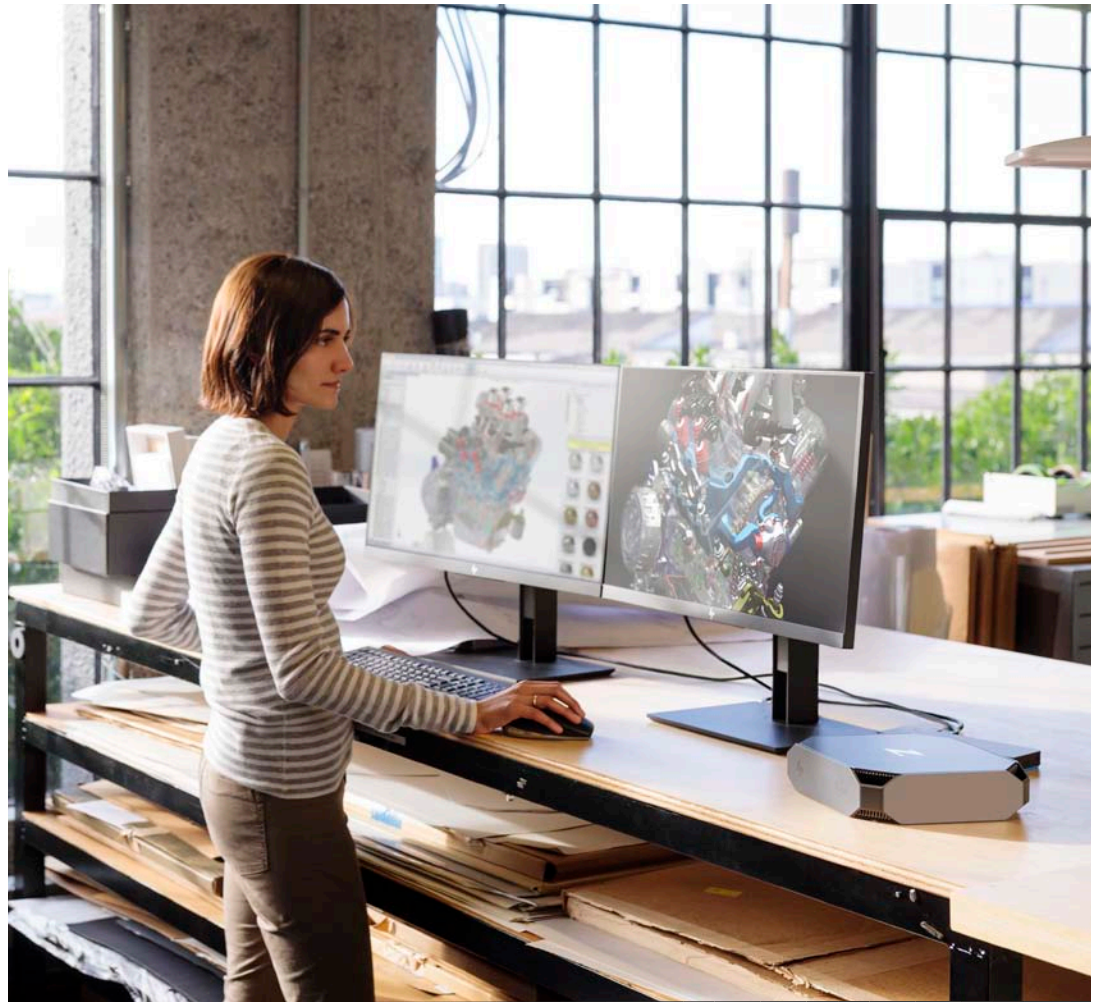
HP Performance Advisor Installation

#### 4

Capturing a Workload

#### 6

Importing and Exporting Workload Data



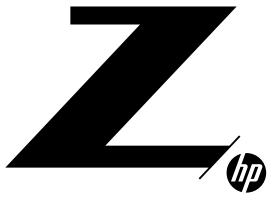
# HP STORAGE ADVISOR USER GUIDE

## INTRODUCTION

HP Storage Advisor is a software solution that analyzes the storage subsystem of a Windows computer while running a given workload and provides predictions for other storage technologies running the same workload that workload running on other storage technologies. HP Storage Advisor runs as a plugin to HP Performance Advisor. A customer invokes HP Storage Advisor from within HP PA and then runs their workload of interest. When the run completes, HP Storage Advisor presents a graphical view that depicts the performance of the current storage technology and the predicted performance of other storage technologies. Depending on the workload, the results may show a benefit, no change or even decreased performance for other technologies.

HP Storage Advisor is available for the following HP Workstation platforms:

- Z2 G4
- Z4 G4
- Z6 G4
- Z8 G4
- ZBook x2 G4
- ZBook Studio X360 G5
- ZBook 14U G5



## TECHNICAL WHITE PAPER

### CONTENTS & NAVIGATION

# 1

Introduction

# 2

HP Performance Advisor Installation

# 4

Capturing a Workload

# 6

Importing and Exporting Workload Data

- ZBook Studio G5
- ZBook 15U G5
- ZBook 15 G5
- ZBook 15v G5
- ZBook 17 G5

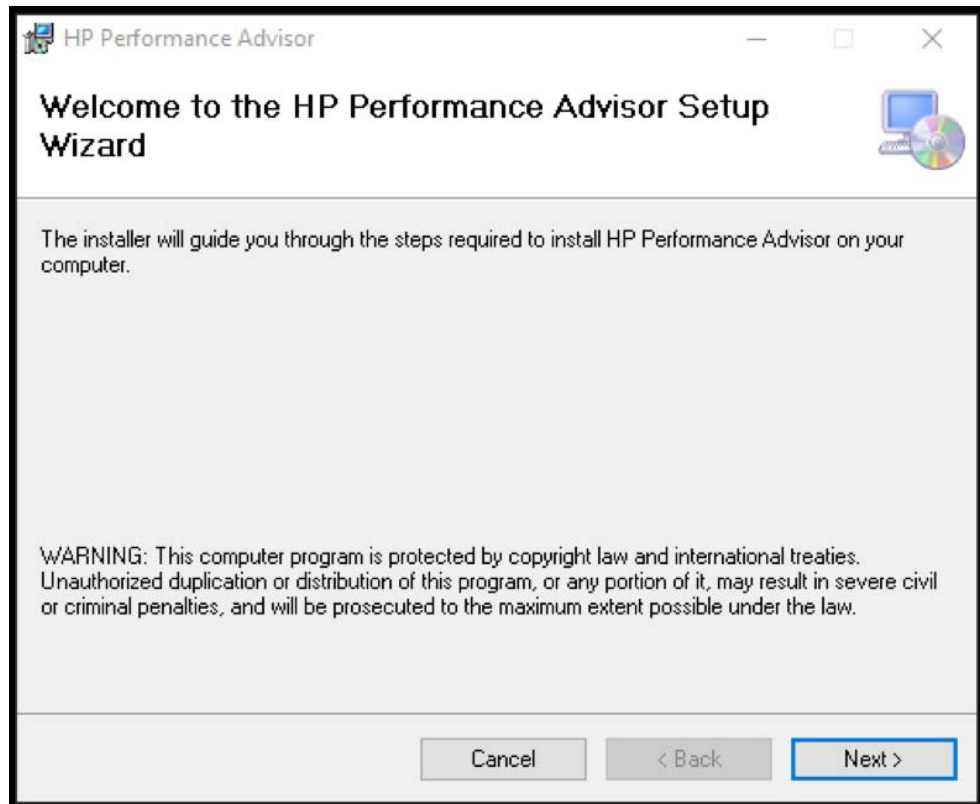
This guide will provide a step-by-step process on how to use HP Storage Advisor.

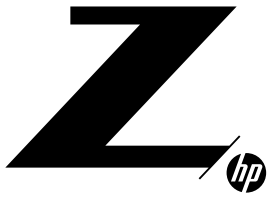
## HP PERFORMANCE ADVISOR INSTALLATION

1. Download HP Performance Advisor. HP Performance Advisor can be downloaded from the following URL: <http://isvpatch.external.hp.com/Advisor2/Advisor.msi>
2. Install HP Performance Advisor by double clicking on Advisor.msi:



3. Click "Next" in the dialog box when prompted to install HP Performance Advisor:





## TECHNICAL WHITE PAPER

### CONTENTS & NAVIGATION

1

Introduction

2

HP Performance Advisor Installation

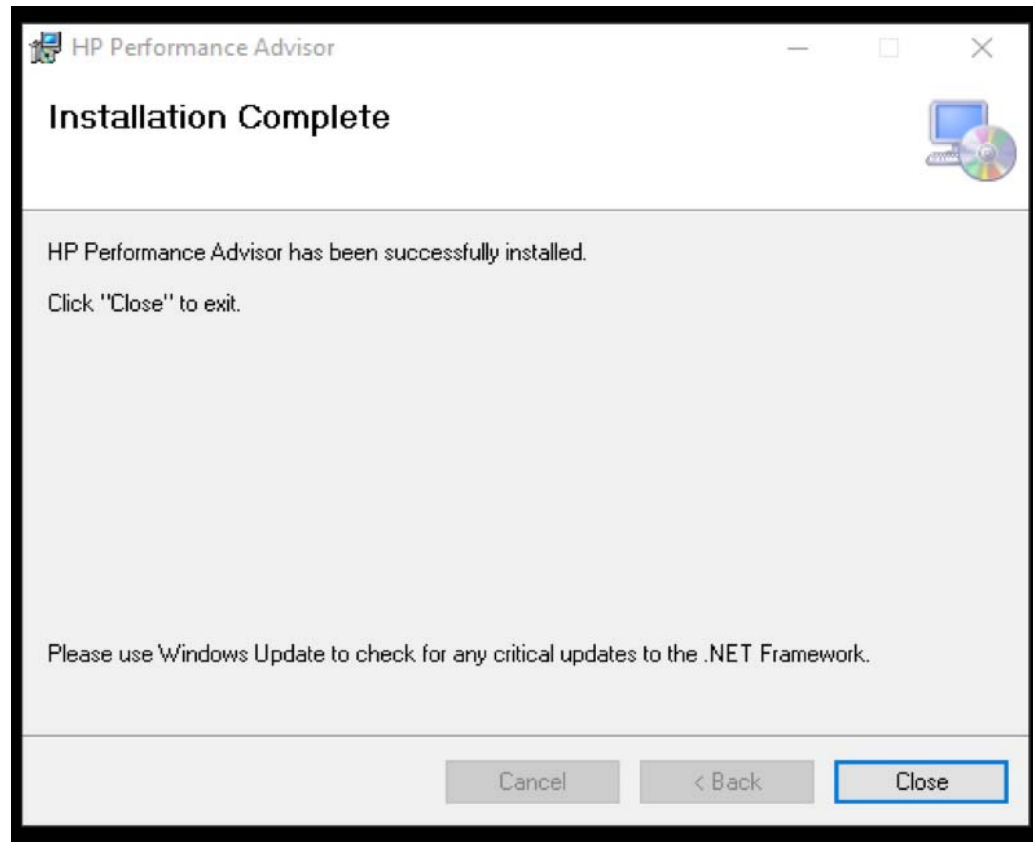
4

Capturing a Workload

6

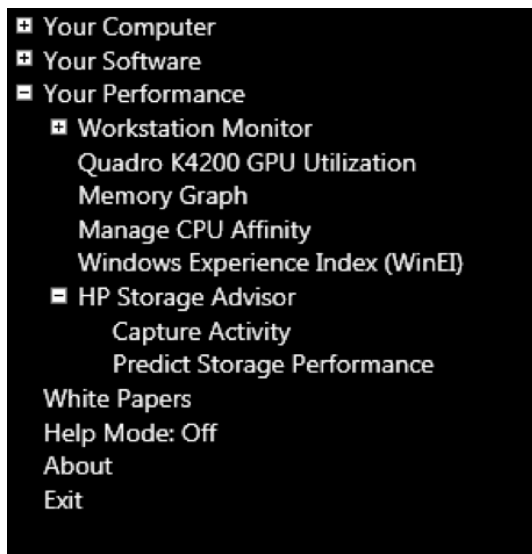
Importing and Exporting Workload Data

4. Once the installation is complete, click on “Close” in the dialog box:

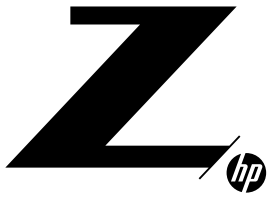


## LAUNCHING AND INSTALLATION OF HP STORAGE ADVISOR

1. Launch HP Performance Advisor.
2. Use the following steps to launch HP Storage Advisor from HP Performance Advisor:
  - a. Click on “Your Performance” to expand the tree.
  - b. Click on “HP Storage Advisor” to expand the tree.
  - c. Click on “Capture Activity”.



3.



## TECHNICAL WHITE PAPER

### CONTENTS & NAVIGATION

1

Introduction

2

HP Performance Advisor Installation

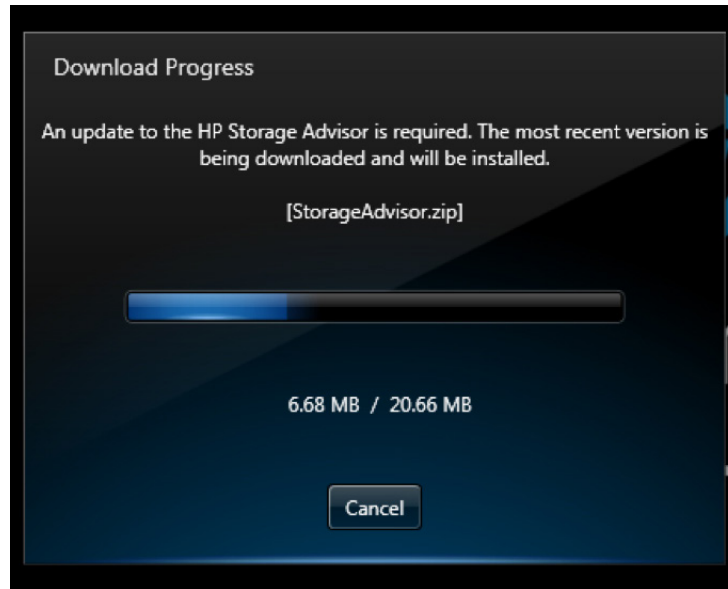
4

Capturing a Workload

6

Importing and Exporting Workload Data

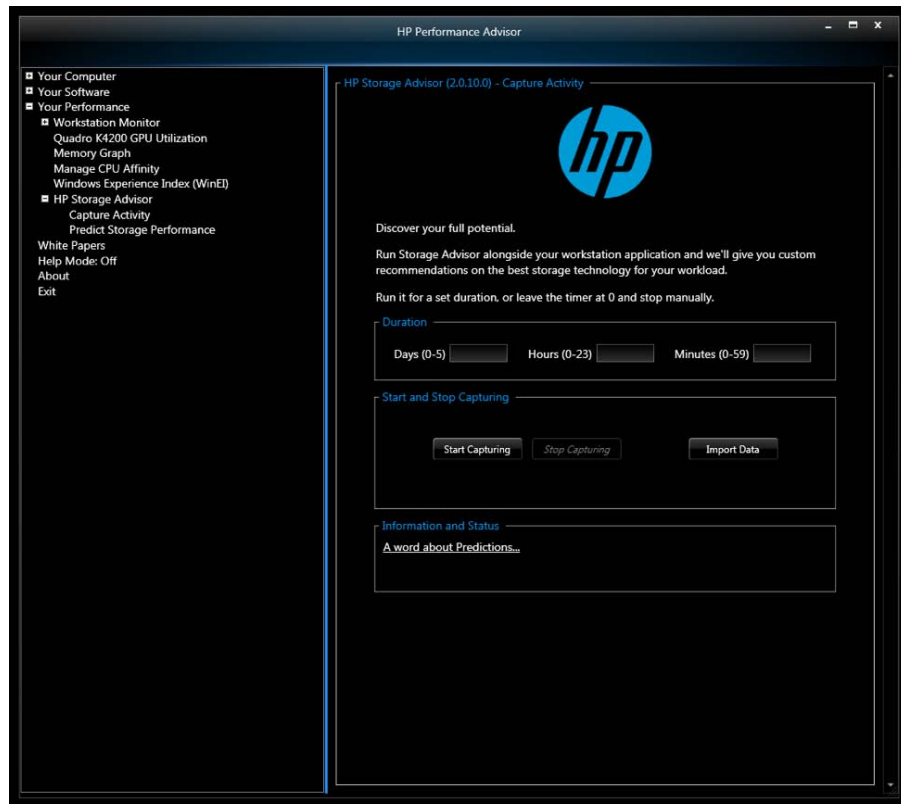
3. If HP Storage Advisor has not been installed on your system, you will be prompted to download HP Storage Advisor from HP.



4. Once the download is complete, you will be presented with the capture screen for HP Storage Advisor.

## CAPTURING A WORKLOAD

1. There are two ways to configure HP Storage Advisor to capture your workload:
  - a. Duration – You can enter the number of days, hours and minutes for HP Storage Advisor to collect storage transaction information. After setting your duration-based information, click on the “Start Capturing” button to begin the capture process. The capture will stop automatically based upon your inputs.
  - b. Manual – If all fields in the duration-based section are empty or set to zero, the capture will be based upon when you start and stop the capture.





# TECHNICAL WHITE PAPER

## CONTENTS & NAVIGATION

1

Introduction

2

HP Performance Advisor Installation

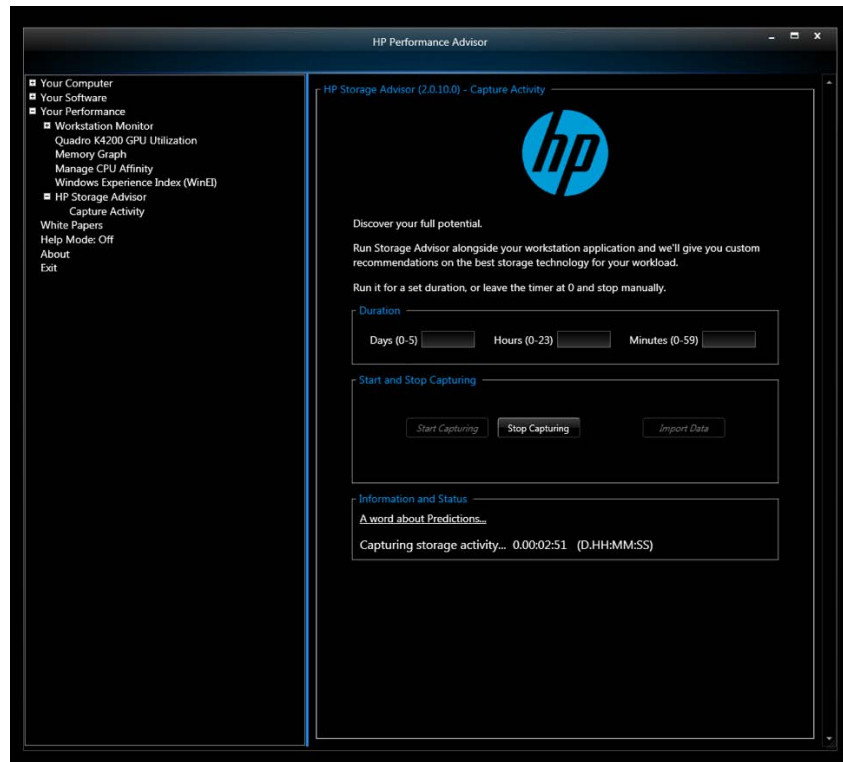
4

Capturing a Workload

6

Importing and Exporting Workload Data

2. Once the capture process has begun, you will see the following information in the HP Storage Advisor dialog:

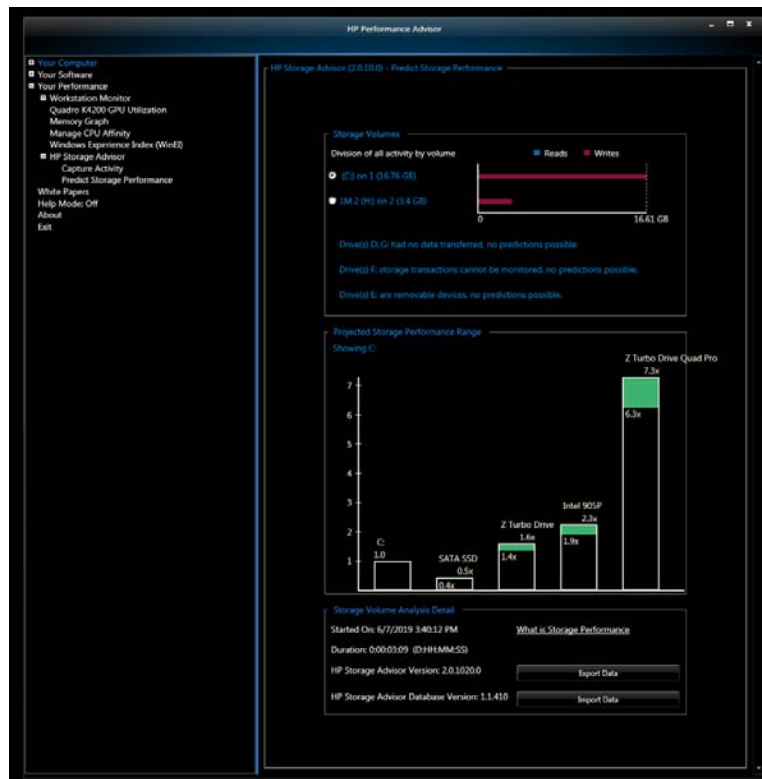


3. Once the capture has started, perform tasks on your workstation.

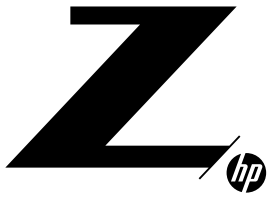
## REVIEWING STORAGE PREDICTIONS

4. After the capture is complete, you will be presented with predictions of your workload to different storage technologies.

- a. As seen in the example below, a workload was run on a SATA HDD. This workload has been predicted to SATA SSD, Z Turbo Drive, Intel® Optane™ SSD 905p and Z Turbo Drive Quad Pro.
- b. The green section of the bar represents the lower and upper boundaries of the prediction.



5.



## TECHNICAL WHITE PAPER

### CONTENTS & NAVIGATION

1

Introduction

---

2

HP Performance Advisor Installation

---

4

Capturing a Workload

---

6

Importing and Exporting Workload Data

# IMPORTING AND EXPORTING WORKLOAD DATA

1. If you would like to save the capture data for review later, click on the “Export Data” button to export the capture data.
2. To load saved data into HP Storage Advisor, click on the “Import Data” button.

LET US HELP YOU CREATE SOME AMAZING BUSINESS  
SOLUTIONS TODAY

CONTACT US

